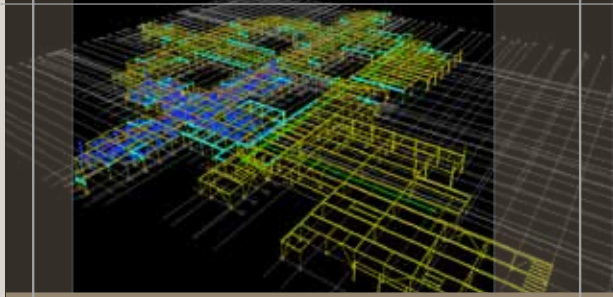


# DESIGN BUILD



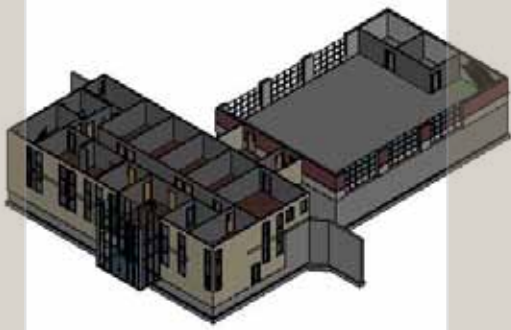
*The Engineering and Design department within Production Services was born from the increased need for cost-effective design-build project delivery and construction phase AutoCAD® drafting services. This specialized group provides engineering and design services for facility maintenance and construction and embraces the cutting edge technology of BIM modeling.*

## CORE CAPABILITIES

- Engineering and design services from the ground up
- BIM modeling throughout the design process utilizing Revit®, AutoCAD® MEP, and Navisworks®
- Lighting, power, and signal system design for new construction coordination, renovation, and service upgrade projects
- Interior and exterior lighting calculations for Title 24
- Distribution system, voltage drop, and short circuit protection studies
- LEED and RCDD Certified designers
- Due diligence assessment of existing building lighting, power, and signal systems
- Photovoltaic array design
- Quality installation from design to completion

## DESIGN-BUILD/DESIGN-ASSIST

- Budgeting assistance and cost control from conception
- Design reviews at each significant phase of design
- Value engineering proposals
- Project managers, engineers, and designers collaborate with the Neal Production Department at set intervals for peer reviews of the design process to insure project constructability
- Scheduling input for all electrical activities



## RECENT DESIGN/BUILD PROJECTS

- AT&T Lab Receptacles
- IDEC NICO - Misc. Projects
- RTC - Pearson Ford
- Sycuan Clinic
- Jet Blue Voice Data
- Cancervax
- BEQ P015
- GNF Vivarium
- Quidel Corporation
- Anadys T.I.
- Park Manor Hotel
- Rehab BEQ 31506
- Rincon Butler Building
- NAB Classroom Building
- P-520 Port Hueneme
- 32nd St. Pier
- BEQ PTO 31
- MCAS Air Passenger Terminal
- IDEC NIMO Temporary Power
- MACC P042 Gym MCAS Miramar
- SDSU Chapultepec Residence Hall
- Point Loma Library
- IDIQ-MACC Clean room NAS N Island
- Pechanga - Cultural Resource Facility
- X022 Renovate/Repair BEQ's - Camp Pendleton
- PTO X015 - BEQ 33531
- Rehab BEQ 13109
- The Art Institute
- Recon Amphib Op's & Boat Maint.
- Sycuan Casino Site Improvements
- P-101 Child Development
- BEQ 210825 repairs - PTO X026
- Naval Amphibious Base BLDG 300 Galley Renovation
- X013 P184 Hanger Mod & Addition MCAS
- Camp Pendleton - BEQ P-044
- The Egyptian Condominiums
- Camp Pendleton - BEQ Area 22
- Children's Hospital - Cogeneration
- X024 Repair BEQ 14031 - Camp Pendleton
- BEQ P-991
- BEQ P-098 San Mateo
- UCI Anteater Rec. Center Expansion
- P-234 Transient Student Quarters
- Camp Pendleton - BEQ P-014
- Winterhaven Hotel/Casino (Quechan Casino Resort)
- U.S. Grant Hotel Remodel
- Johnson & Johnson Underground
- Nobel Athletic Area & Library
- MACC Weapons/Lab Port Hueneme
- SDSU Arts/Letters
- P1005 Wounded Warrior BEQ
- P-254 BEQ Naval Station, SD
- Scripps Ranch Middle School
- P-206 Marsoc BEQ and Dining Facility
- Twin Oaks Valley WTP
- Harrah's Rincon Hotel & Casino
- Poway PAC Stage and Exterior Ltg
- BAE Computer Room #3E-21009
- Sycuan Casino Parking Structure
- Los Angeles Southwest College

